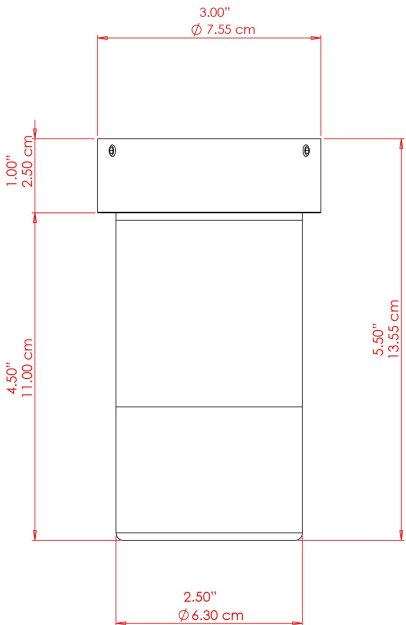


ENNIS Bathroom Light

MLBCF010ANTBRSIP44 Antique Brass



MATERIAL Brass | Glass

HEIGHT 5.5"

WIDTH | DIAMETER 3"

LENGTH | PROJECTION n/a

WEIGHT 1 kg | 2.3 lbs

LAMPHOLDER GU10

MAX WATTAGE 5W

VOLTAGE 110/120v

ENVIRONMENTAL RATING Damp Location (IP44)

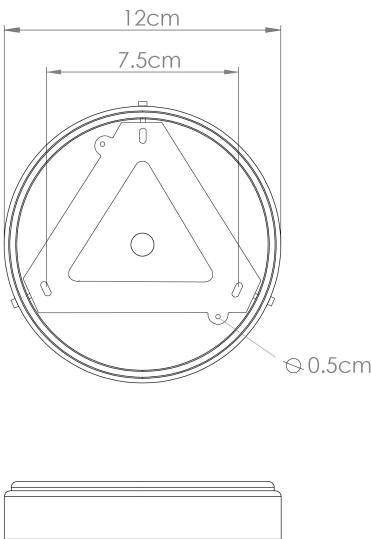
CLASS PROTECTION Class I

SHADE -

FLEX | BAR | CHAIN LENGTH n/a

CABLE TYPE |

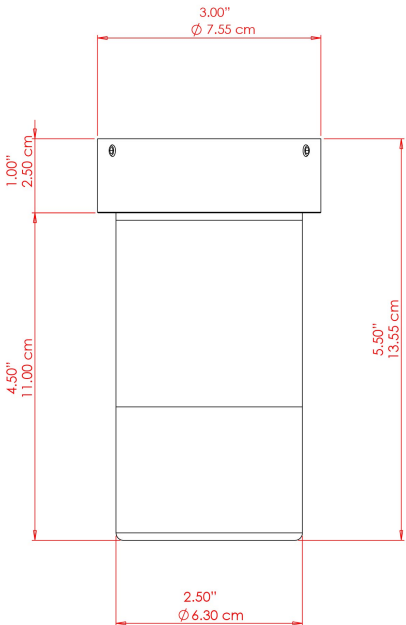
FIXING BRACKET: MLWB17 | Antique Brass





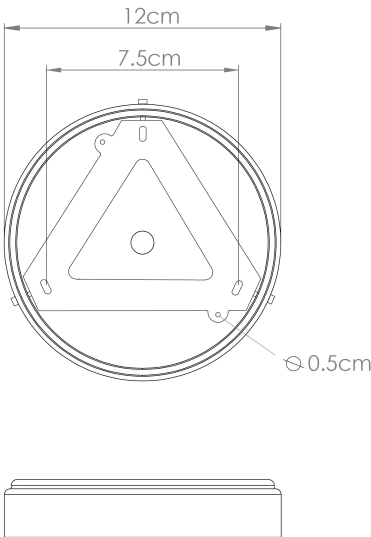
ENNIS Bathroom Light

MLBCF010ANTBR SIP65 Antique Brass



MATERIAL	Brass   Glass
HEIGHT	5.5"
WIDTH   DIAMETER	3"
LENGTH   PROJECTION	n/a
WEIGHT	1 kg   2.3 lbs
LAMPHOLDER	GU10
MAX WATTAGE	5W
VOLTAGE	110/120v
ENVIRONMENTAL RATING	Wet Location (IP65)
CLASS PROTECTION	Class I
SHADE	-
FLEX   BAR   CHAIN LENGTH	n/a
CABLE TYPE	

FIXING BRACKET: MLWB17 | Antique Brass

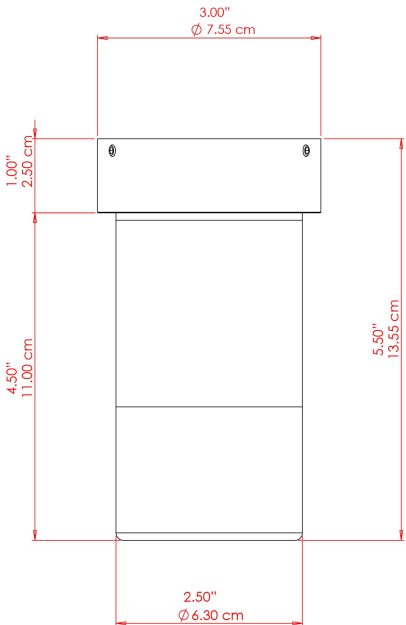


Product Notes:  
1) Bulbs not included. 2) Dimensions do not include bulbs. 3) All products are individually made-to-order and therefore may differ slightly within manufacturing tolerances. 4) Cable / chain can be shortened during installation. Longer cable / chain lengths available on request. 5) Additional color finishes may be available on request. 6) Twisted cable is not available for UL wired products. Round cable in black or brown only is supplied instead. 7) Refer to our website for a full list of terms and conditions.



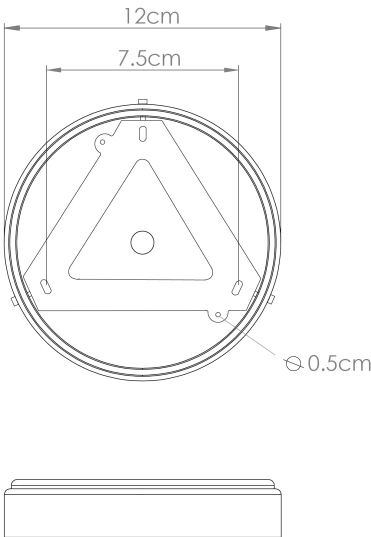
ENNIS Bathroom Light

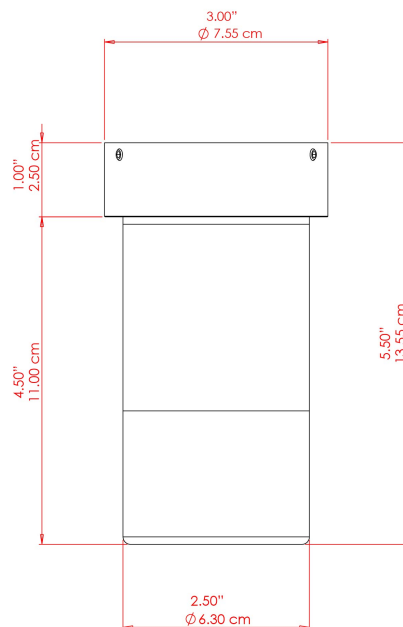
MLBCF010ANTSLVIP44 Antique Silver



MATERIAL	Brass   Glass
HEIGHT	5.5"
WIDTH   DIAMETER	3"
LENGTH   PROJECTION	n/a
WEIGHT	1 kg   2.3 lbs
LAMPHOLDER	GU10
MAX WATTAGE	5W
VOLTAGE	110/120v
ENVIRONMENTAL RATING	Damp Location (IP44)
CLASS PROTECTION	Class I
SHADE	-
FLEX   BAR   CHAIN LENGTH	n/a
CABLE TYPE	

FIXING BRACKET: MLWB17 | Antique Silver





MATERIAL Brass | Glass

HEIGHT 5.5"

WIDTH | DIAMETER 3"

LENGTH | PROJECTION n/a

WEIGHT 1 kg | 2.3 lbs

LAMPHOLDER GU10

MAX WATTAGE 5W

VOLTAGE 110/120v

ENVIRONMENTAL RATING Damp Location (IP44)

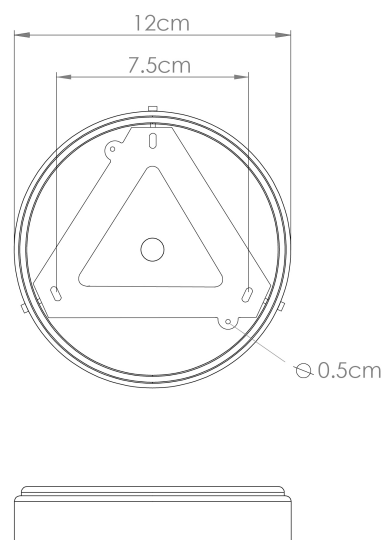
CLASS PROTECTION Class I

SHADE -

FLEX | BAR | CHAIN LENGTH n/a

CABLE TYPE |

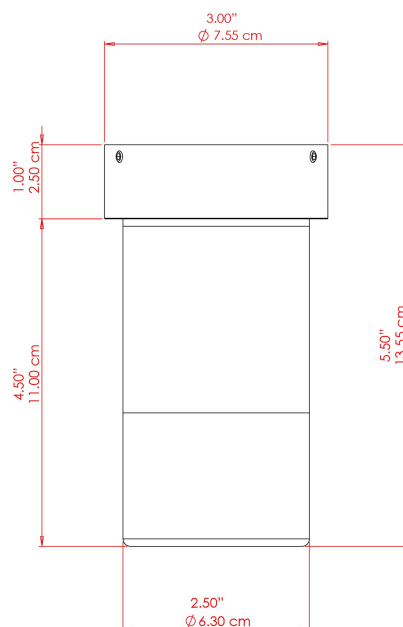
FIXING BRACKET: MLWB17 | Natural Brass





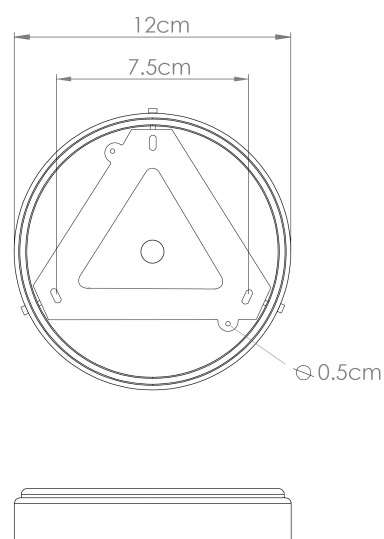
## ENNIS Bathroom Light

MLBCF010NATBRSIP65 Natural Brass



MATERIAL	Brass   Glass
HEIGHT	5.5"
WIDTH   DIAMETER	3"
LENGTH   PROJECTION	n/a
WEIGHT	1 kg   2.3 lbs
LAMPHOLDER	GU10
MAX WATTAGE	5W
VOLTAGE	110/120v
ENVIRONMENTAL RATING	Wet Location (IP65)
CLASS PROTECTION	Class I
SHADE	-
FLEX   BAR   CHAIN LENGTH	n/a
CABLE TYPE	

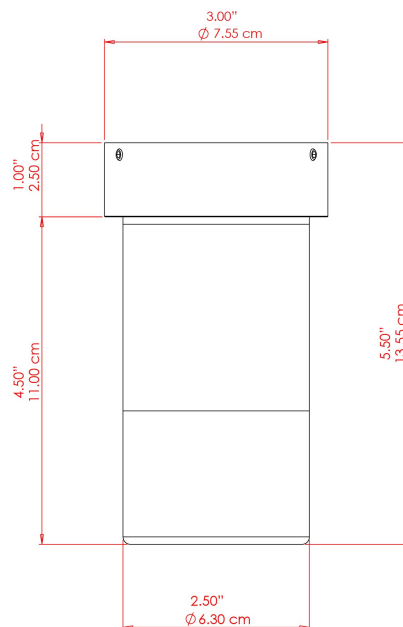
FIXING BRACKET: MLWB17 | Natural Brass



### Product Notes:

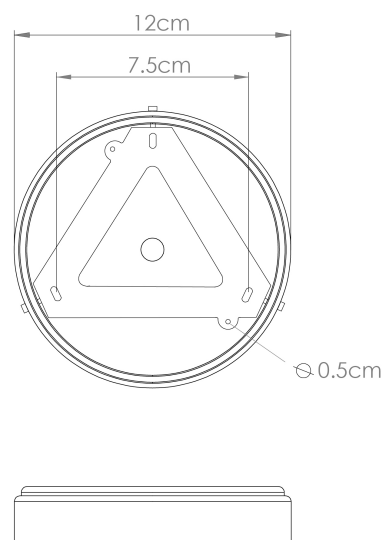
1) Bulbs not included. 2) Dimensions do not include bulbs. 3) All products are individually made-to-order and therefore may differ slightly within manufacturing tolerances. 4) Cable / chain can be shortened during installation. Longer cable / chain lengths available on request. 5) Additional color finishes may be available on request. 6) Twisted cable is not available for UL wired products. Round cable in black or brown only is supplied instead. 7) Refer to our website for a full list of terms and conditions.

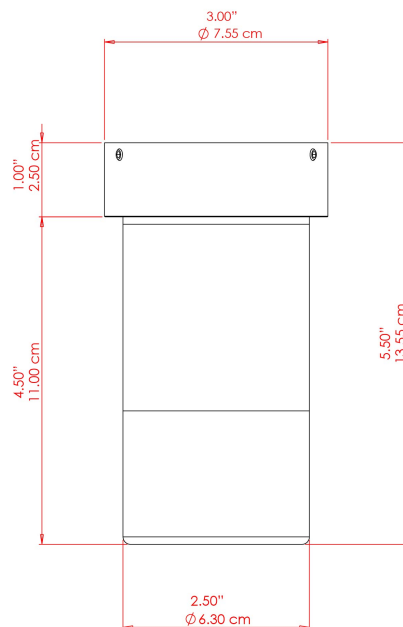




MATERIAL	Brass   Glass
HEIGHT	5.5"
WIDTH   DIAMETER	3"
LENGTH   PROJECTION	n/a
WEIGHT	1 kg   2.3 lbs
LAMPHOLDER	GU10
MAX WATTAGE	5W
VOLTAGE	110/120v
ENVIRONMENTAL RATING	Damp Location (IP44)
CLASS PROTECTION	Class I
SHADE	-
FLEX   BAR   CHAIN LENGTH	n/a
CABLE TYPE	

### FIXING BRACKET: MLWB17 | Polished Brass





MATERIAL	Brass   Glass
HEIGHT	5.5"
WIDTH   DIAMETER	3"
LENGTH   PROJECTION	n/a
WEIGHT	1 kg   2.3 lbs
LAMPHOLDER	GU10
MAX WATTAGE	5W
VOLTAGE	110/120v
ENVIRONMENTAL RATING	Damp Location (IP44)
CLASS PROTECTION	Class I
SHADE	-
FLEX   BAR   CHAIN LENGTH	n/a
CABLE TYPE	

### FIXING BRACKET: MLWB17 | Satin Brass

