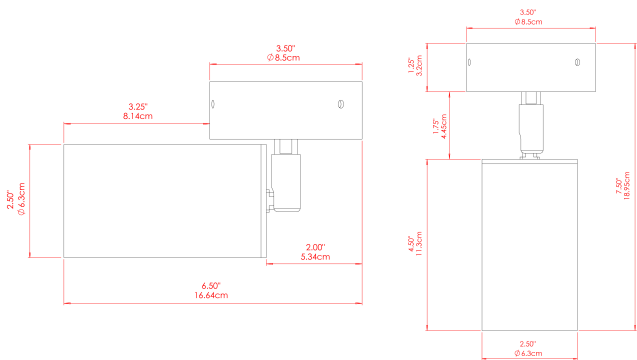




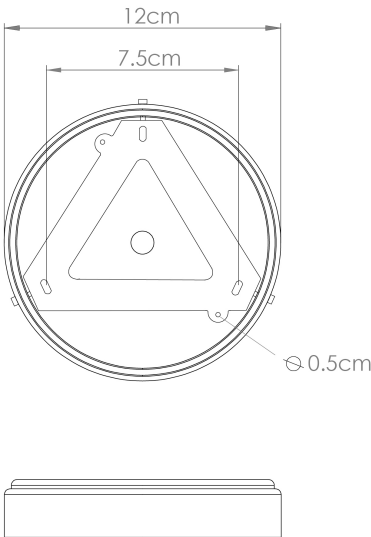
EVANSTON Ceiling Light

MLCF121ANTBRS Antique Brass



MATERIAL	Brass
HEIGHT	7.75"
WIDTH   DIAMETER	3.25"
LENGTH   PROJECTION	n/a
WEIGHT	0.8 kg   1.8 lbs
LAMPHOLDER	GU10
MAX WATTAGE	5W
VOLTAGE	110/120v
ENVIRONMENTAL RATING	Dry Location (IP20)
CLASS PROTECTION	Class I
SHADE	-
FLEX   BAR   CHAIN LENGTH	n/a
CABLE TYPE	MLCA009   Black PVC Flexible Cable   2 Core

FIXING BRACKET: MLWB17 | Antique Brass



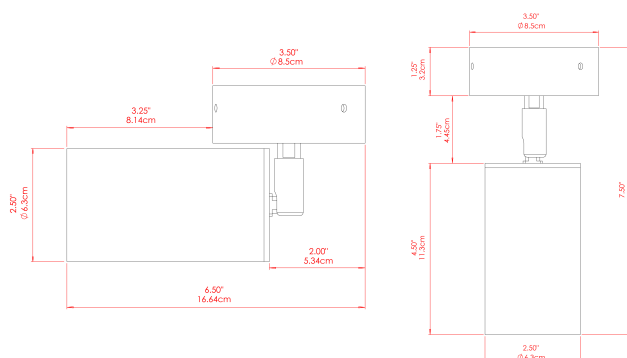
Product Notes:  
1) Bulbs not included. 2) Dimensions do not include bulbs. 3) All products are individually made-to-order and therefore may differ slightly within manufacturing tolerances. 4) Cable / chain can be shortened during installation. Longer cable / chain lengths available on request. 5) Additional color finishes may be available on request. 6) Twisted cable is not available for UL wired products. Round cable in black or brown only is supplied instead. 7) Refer to our website for a full list of terms and conditions.





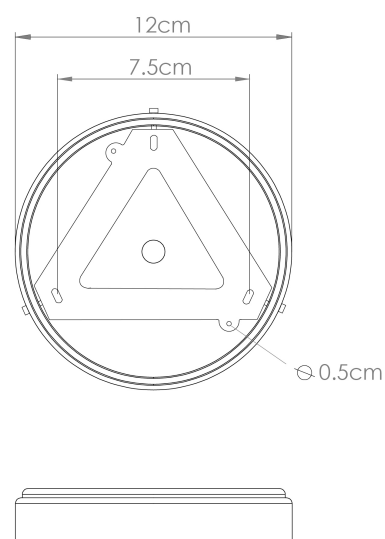
## EVANSTON Ceiling Light

MLCF121ANTSLV Antique Silver



MATERIAL	Brass
HEIGHT	7.75"
WIDTH   DIAMETER	3.25"
LENGTH   PROJECTION	n/a
WEIGHT	0.8 kg   1.8 lbs
LAMPHOLDER	GU10
MAX WATTAGE	5W
VOLTAGE	110/120v
ENVIRONMENTAL RATING	Dry Location (IP20)
CLASS PROTECTION	Class I
SHADE	-
FLEX   BAR   CHAIN LENGTH	n/a
CABLE TYPE	MLCA009   Black PVC Flexible Cable   2 Core

FIXING BRACKET: MLWB17 | Antique Silver



### Product Notes:

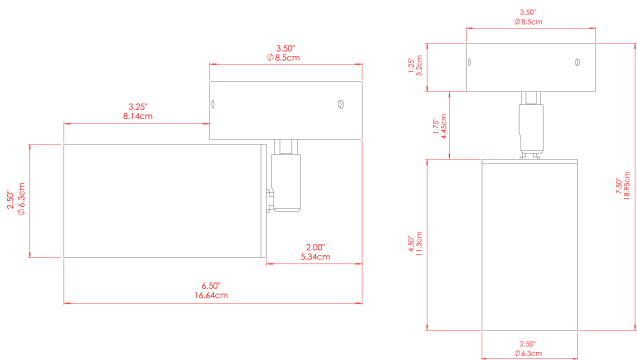
1) Bulbs not included. 2) Dimensions do not include bulbs. 3) All products are individually made-to-order and therefore may differ slightly within manufacturing tolerances. 4) Cable / chain can be shortened during installation. Longer cable / chain lengths available on request. 5) Additional color finishes may be available on request. 6) Twisted cable is not available for UL wired products. Round cable in black or brown only is supplied instead. 7) Refer to our website for a full list of terms and conditions.





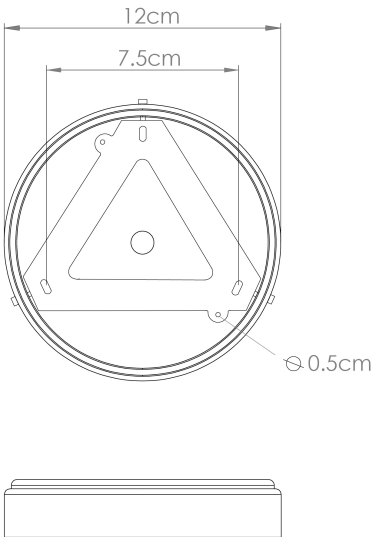
EVANSTON Ceiling Light

MLCF121POLBRS Polished Brass



MATERIAL	Brass
HEIGHT	7.75"
WIDTH   DIAMETER	3.25"
LENGTH   PROJECTION	n/a
WEIGHT	0.8 kg   1.8 lbs
LAMPHOLDER	GU10
MAX WATTAGE	5W
VOLTAGE	110/120v
ENVIRONMENTAL RATING	Dry Location (IP20)
CLASS PROTECTION	Class I
SHADE	-
FLEX   BAR   CHAIN LENGTH	n/a
CABLE TYPE	MLCA009   Black PVC Flexible Cable   2 Core

FIXING BRACKET: MLWB17 | Polished Brass



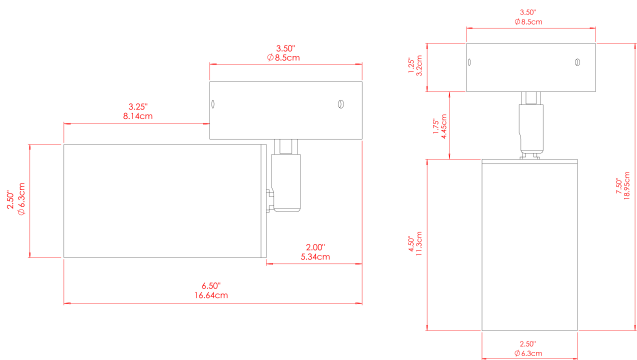
Product Notes:  
1) Bulbs not included. 2) Dimensions do not include bulbs. 3) All products are individually made-to-order and therefore may differ slightly within manufacturing tolerances. 4) Cable / chain can be shortened during installation. Longer cable / chain lengths available on request. 5) Additional color finishes may be available on request. 6) Twisted cable is not available for UL wired products. Round cable in black or brown only is supplied instead. 7) Refer to our website for a full list of terms and conditions.





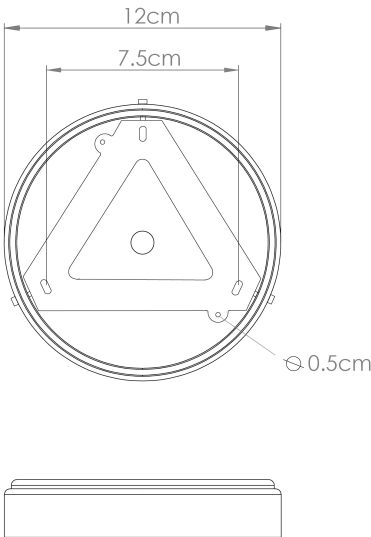
EVANSTON Ceiling Light

MLCF121SATBRS Satin Brass



MATERIAL	Brass
HEIGHT	7.75"
WIDTH   DIAMETER	3.25"
LENGTH   PROJECTION	n/a
WEIGHT	0.8 kg   1.8 lbs
LAMPHOLDER	GU10
MAX WATTAGE	5W
VOLTAGE	110/120v
ENVIRONMENTAL RATING	Dry Location (IP20)
CLASS PROTECTION	Class I
SHADE	-
FLEX   BAR   CHAIN LENGTH	n/a
CABLE TYPE	MLCA009   Black PVC Flexible Cable   2 Core

FIXING BRACKET: MLWB17 | Satin Brass



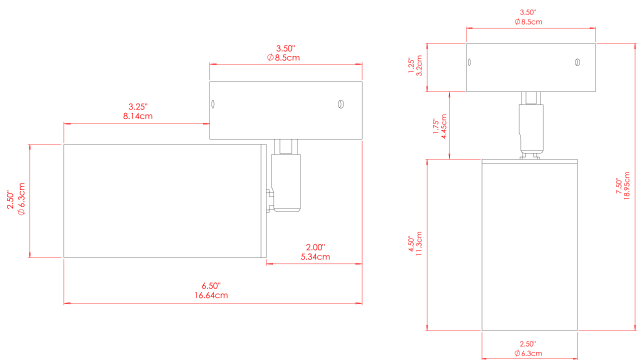
Product Notes:  
1) Bulbs not included. 2) Dimensions do not include bulbs. 3) All products are individually made-to-order and therefore may differ slightly within manufacturing tolerances. 4) Cable / chain can be shortened during installation. Longer cable / chain lengths available on request. 5) Additional color finishes may be available on request. 6) Twisted cable is not available for UL wired products. Round cable in black or brown only is supplied instead. 7) Refer to our website for a full list of terms and conditions.





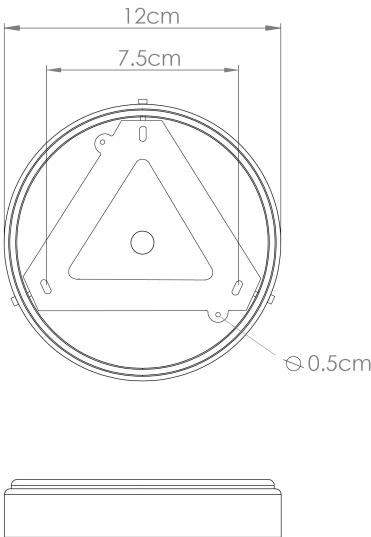
EVANSTON Ceiling Light

MLCF121PCMBK Matt Black



MATERIAL	Brass
HEIGHT	7.75"
WIDTH   DIAMETER	3.25"
LENGTH   PROJECTION	n/a
WEIGHT	0.8 kg   1.8 lbs
LAMPHOLDER	GU10
MAX WATTAGE	5W
VOLTAGE	110/120v
ENVIRONMENTAL RATING	Dry Location (IP20)
CLASS PROTECTION	Class I
SHADE	-
FLEX   BAR   CHAIN LENGTH	n/a
CABLE TYPE	MLCA009   Black PVC Flexible Cable   2 Core

FIXING BRACKET: MLWB17 | Matte Black



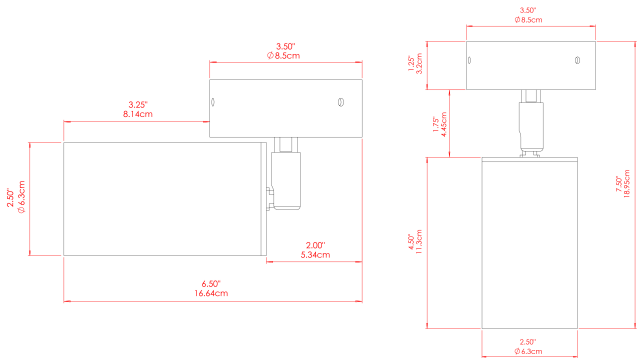
Product Notes:  
1) Bulbs not included. 2) Dimensions do not include bulbs. 3) All products are individually made-to-order and therefore may differ slightly within manufacturing tolerances. 4) Cable / chain can be shortened during installation. Longer cable / chain lengths available on request. 5) Additional color finishes may be available on request. 6) Twisted cable is not available for UL wired products. Round cable in black or brown only is supplied instead. 7) Refer to our website for a full list of terms and conditions.





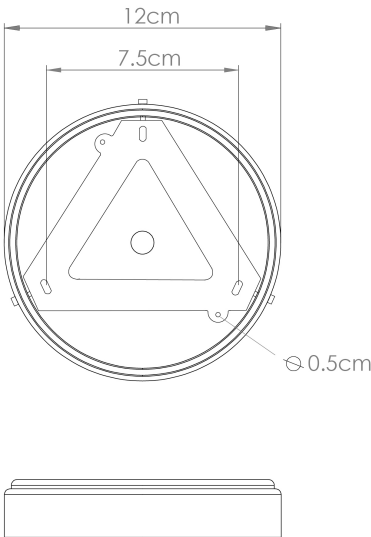
EVANSTON Ceiling Light

MLCF121PCMMT



MATERIAL	Brass
HEIGHT	7.75"
WIDTH   DIAMETER	3.25"
LENGTH   PROJECTION	n/a
WEIGHT	0.8 kg   1.8 lbs
LAMPHOLDER	GU10
MAX WATTAGE	5W
VOLTAGE	110/120v
ENVIRONMENTAL RATING	Dry Location (IP20)
CLASS PROTECTION	Class I
SHADE	
FLEX   BAR   CHAIN LENGTH	n/a
CABLE TYPE	MLCA009   Black PVC Flexible Cable   2 Core

FIXING BRACKET: MLWB17 | PC Mint Turquoise



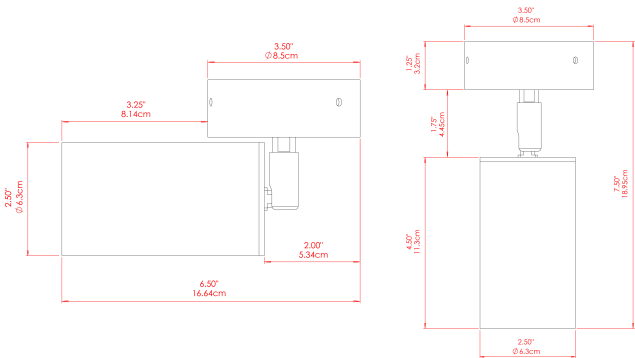
Product Notes:  
1) Bulbs not included. 2) Dimensions do not include bulbs. 3) All products are individually made-to-order and therefore may differ slightly within manufacturing tolerances. 4) Cable / chain can be shortened during installation. Longer cable / chain lengths available on request. 5) Additional color finishes may be available on request. 6) Twisted cable is not available for UL wired products. Round cable in black or brown only is supplied instead. 7) Refer to our website for a full list of terms and conditions.





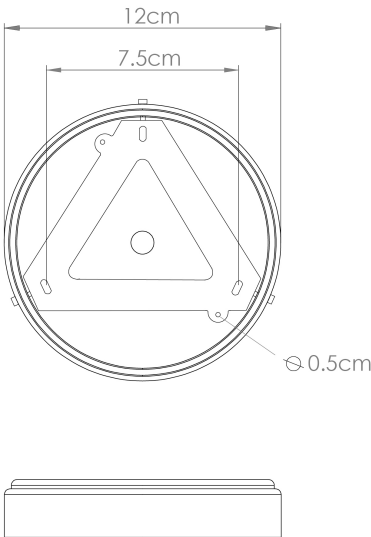
EVANSTON Ceiling Light

MLCF121PCMSB



MATERIAL	Brass
HEIGHT	7.75"
WIDTH   DIAMETER	3.25"
LENGTH   PROJECTION	n/a
WEIGHT	0.8 kg   1.8 lbs
LAMPHOLDER	GU10
MAX WATTAGE	5W
VOLTAGE	110/120v
ENVIRONMENTAL RATING	Dry Location (IP20)
CLASS PROTECTION	Class I
SHADE	
FLEX   BAR   CHAIN LENGTH	n/a
CABLE TYPE	MLCA009   Black PVC Flexible Cable   2 Core

FIXING BRACKET: MLWB17 | PC Sapphire Blue



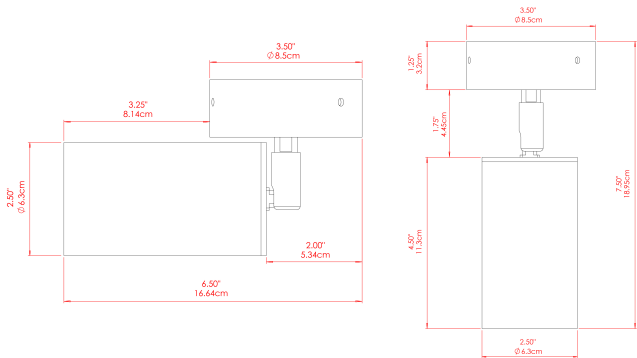
Product Notes:  
1) Bulbs not included. 2) Dimensions do not include bulbs. 3) All products are individually made-to-order and therefore may differ slightly within manufacturing tolerances. 4) Cable / chain can be shortened during installation. Longer cable / chain lengths available on request. 5) Additional color finishes may be available on request. 6) Twisted cable is not available for UL wired products. Round cable in black or brown only is supplied instead. 7) Refer to our website for a full list of terms and conditions.





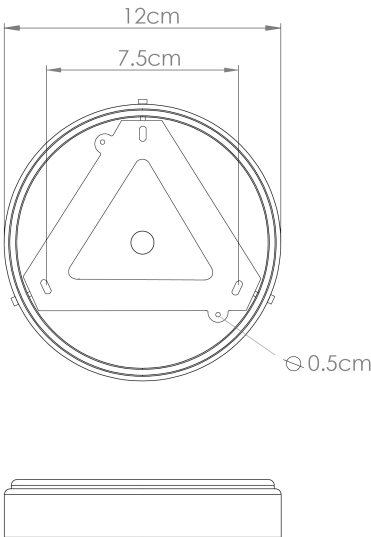
EVANSTON Ceiling Light

MLCF121PCMAP



MATERIAL	Brass
HEIGHT	7.75"
WIDTH   DIAMETER	3.25"
LENGTH   PROJECTION	n/a
WEIGHT	0.8 kg   1.8 lbs
LAMPHOLDER	GU10
MAX WATTAGE	5W
VOLTAGE	110/120v
ENVIRONMENTAL RATING	Dry Location (IP20)
CLASS PROTECTION	Class I
SHADE	
FLEX   BAR   CHAIN LENGTH	n/a
CABLE TYPE	MLCA009   Black PVC Flexible Cable   2 Core

FIXING BRACKET: MLWB17 | PC Antique Pink



Product Notes:  
1) Bulbs not included. 2) Dimensions do not include bulbs. 3) All products are individually made-to-order and therefore may differ slightly within manufacturing tolerances. 4) Cable / chain can be shortened during installation. Longer cable / chain lengths available on request. 5) Additional color finishes may be available on request. 6) Twisted cable is not available for UL wired products. Round cable in black or brown only is supplied instead. 7) Refer to our website for a full list of terms and conditions.

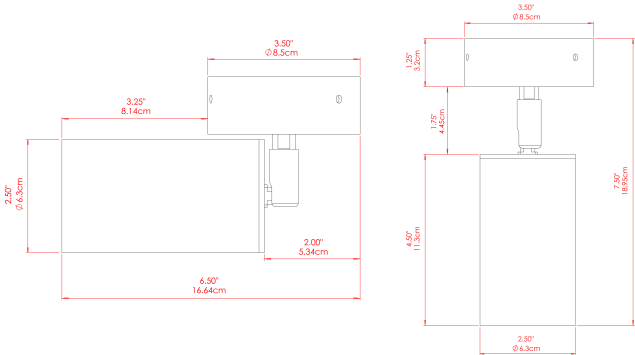






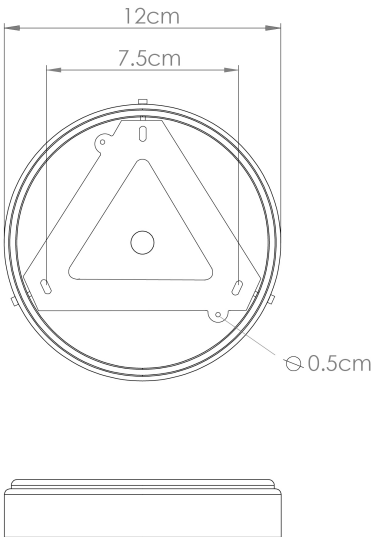
EVANSTON Ceiling Light

MLCF121PCMHY



MATERIAL	Brass
HEIGHT	7.75"
WIDTH   DIAMETER	3.25"
LENGTH   PROJECTION	n/a
WEIGHT	0.8 kg   1.8 lbs
LAMPHOLDER	GU10
MAX WATTAGE	5W
VOLTAGE	110/120v
ENVIRONMENTAL RATING	Dry Location (IP20)
CLASS PROTECTION	Class I
SHADE	
FLEX   BAR   CHAIN LENGTH	n/a
CABLE TYPE	MLCA009   Black PVC Flexible Cable   2 Core

FIXING BRACKET: MLWB17 | PC Mustard Honey Yellow



Product Notes:  
1) Bulbs not included. 2) Dimensions do not include bulbs. 3) All products are individually made-to-order and therefore may differ slightly within manufacturing tolerances. 4) Cable / chain can be shortened during installation. Longer cable / chain lengths available on request. 5) Additional color finishes may be available on request. 6) Twisted cable is not available for UL wired products. Round cable in black or brown only is supplied instead. 7) Refer to our website for a full list of terms and conditions.

