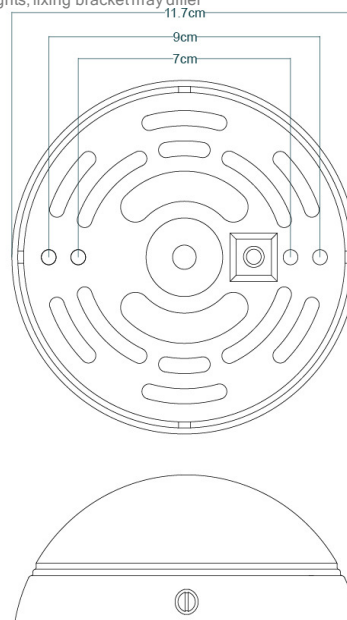


MATERIAL	Brass
HEIGHT	6cm 2.36"
WIDTH DIAMETER	2.8cm 1.1"
LENGTH PROJECTION	n/a
WEIGHT	0.76KG 1.68lbs
LAMPHOLDER	Integrated x 0
MAX WATTAGE	- x 0
VOLTAGE	220/240v or 110/120v
IP RATING	20
CLASS PROTECTION	I
SHADE	-
FLEX BAR CHAIN LENGT	100cm 40"
CABLE TYPE	MLCA030

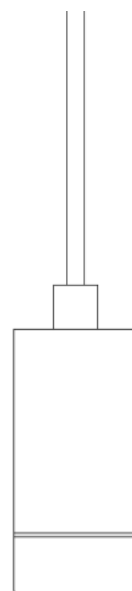
Fixing Bracket MLWB11 | Antiqué Brass

*For UL wired lights, fixing bracket may differ



Product Notes:

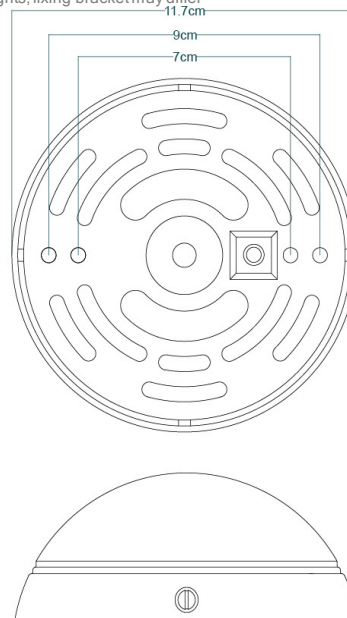
1) Lamps included with light fixture. 2) All products are individually hand crafted, therefore may differ slightly within manufacturing tolerances. 3) Please refer to: <http://www.mullanlighting.com/terms> for full list of Terms & Conditions. 4) Cable/Chain can be shortened during installation. 5) Longer Cable/Chain available on request. 6) Additional colour finishes available on request. 7.) Dimensions do not include lamps. 8.) Products wired to UL standards will operate at 110/120v with the appropriate lampholders.



MATERIAL	Brass
HEIGHT	6cm 2.36"
WIDTH DIAMETER	2.8cm 1.1"
LENGTH PROJECTION	n/a
WEIGHT	0.76KG 1.68lbs
LAMPHOLDER	Integrated x 0
MAX WATTAGE	- x 0
VOLTAGE	220/240v or 110/120v
IP RATING	20
CLASS PROTECTION	I
SHADE	-
FLEX BAR CHAIN LENGT	100cm 40"
CABLE TYPE	MLCA028 2 Core Round Black Braid PVC

Fixing Bracket MLWB11 | Antique Silver

*For UL wired lights, fixing bracket may differ



Product Notes:

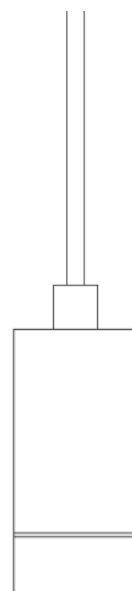
1) Lamps included with light fixture. 2) All products are individually hand crafted, therefore may differ slightly within manufacturing tolerances. 3) Please refer to: <http://www.mullanlighting.com/terms> for full list of Terms & Conditions. 4) Cable/Chain can be shortened during installation. 5) Longer Cable/Chain available on request. 6) Additional colour finishes available on request. 7.) Dimensions do not include lamps. 8.) Products wired to UL standards will operate at 110/120v with the appropriate lampholders.

PORI Pendant

MLP407PCMBK Matt Black



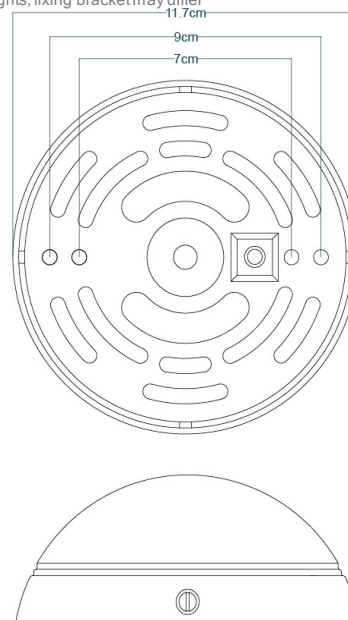
POWDER-COATED
MATTE BLACK



MATERIAL	Brass
HEIGHT	6cm 2.36"
WIDTH DIAMETER	2.8cm 1.1"
LENGTH PROJECTION	n/a
WEIGHT	0.76KG 1.68lbs
LAMPHOLDER	Integrated x 0
MAX WATTAGE	- x 0
VOLTAGE	220/240v or 110/120v
IP RATING	20
CLASS PROTECTION	I
SHADE	-
FLEX BAR CHAIN LENGT	100cm 40"
CABLE TYPE	MLCA028 2 Core Round Black Braid PVC

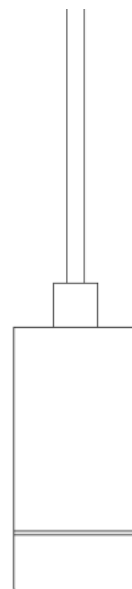
Fixing Bracket MLWB11 | Matt Black

*For UL wired lights, fixing bracket may differ



Product Notes:

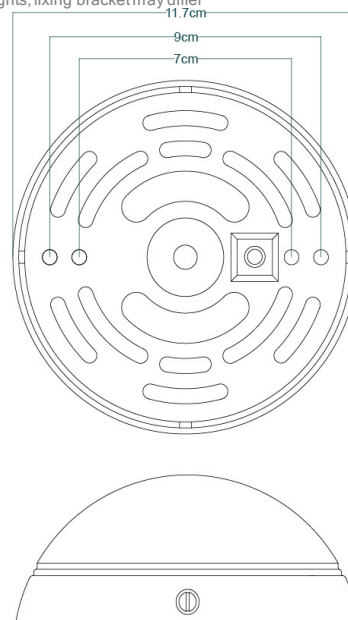
1) Lamps included with light fixture. 2) All products are individually hand crafted, therefore may differ slightly within manufacturing tolerances. 3) Please refer to: <http://www.mullanlighting.com/terms> for full list of Terms & Conditions. 4) Cable/Chain can be shortened during installation. 5) Longer Cable/Chain available on request. 6) Additional colour finishes available on request. 7.) Dimensions do not include lamps. 8.) Products wired to UL standards will operate at 110/120v with the appropriate lampholders.



MATERIAL	Brass
HEIGHT	6cm 2.36"
WIDTH DIAMETER	2.8cm 1.1"
LENGTH PROJECTION	n/a
WEIGHT	0.76KG 1.68lbs
LAMPHOLDER	Integrated x 0
MAX WATTAGE	- x 0
VOLTAGE	220/240v or 110/120v
IP RATING	20
CLASS PROTECTION	I
SHADE	-
FLEX BAR CHAIN LENGT	100cm 40"
CABLE TYPE	MLCA028 2 Core Round Black Braid PVC

Fixing Bracket MLWB11 | White

*For UL wired lights, fixing bracket may differ

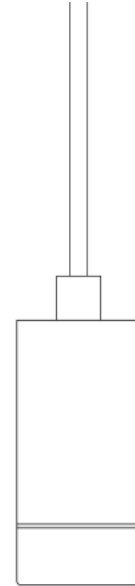


Product Notes:

1) Lamps included with light fixture. 2) All products are individually hand crafted, therefore may differ slightly within manufacturing tolerances. 3) Please refer to: <http://www.mullanlighting.com/terms> for full list of Terms & Conditions. 4) Cable/Chain can be shortened during installation. 5) Longer Cable/Chain available on request. 6) Additional colour finishes available on request. 7.) Dimensions do not include lamps. 8.) Products wired to UL standards will operate at 110/120v with the appropriate lampholders.

PORi Pendant

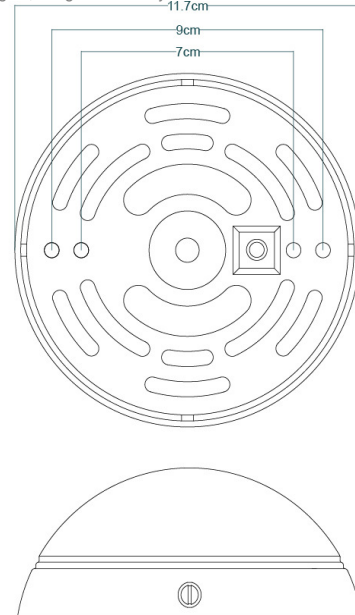
MLP407POLBRS Polished Brass



MATERIAL	Brass
HEIGHT	6cm 2.36"
WIDTH DIAMETER	2.8cm 1.1"
LENGTH PROJECTION	n/a
WEIGHT	0.76KG 1.68lbs
LAMPHOLDER	Integrated x 0
MAX WATTAGE	- x 0
VOLTAGE	220/240v or 110/120v
IP RATING	20
CLASS PROTECTION	I
SHADE	-
FLEX BAR CHAIN LENGT	100cm 40"
CABLE TYPE	MLCA028 2 Core Round Black Braid PVC

Fixing Bracket MLWB11 | Polished Brass

*For UL wired lights, fixing bracket may differ

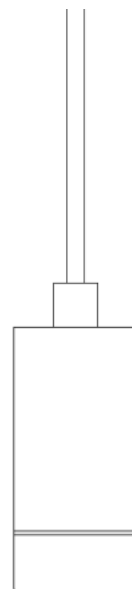


Product Notes:

1) Lamps included with light fixture. 2) All products are individually hand crafted, therefore may differ slightly within manufacturing tolerances. 3) Please refer to: <http://www.mullanlighting.com/terms> for full list of Terms & Conditions. 4) Cable/Chain can be shortened during installation. 5) Longer Cable/Chain available on request. 6) Additional colour finishes available on request. 7.) Dimensions do not include lamps. 8.) Products wired to UL standards will operate at 110/120v with the appropriate lampholders.

PORI Pendant

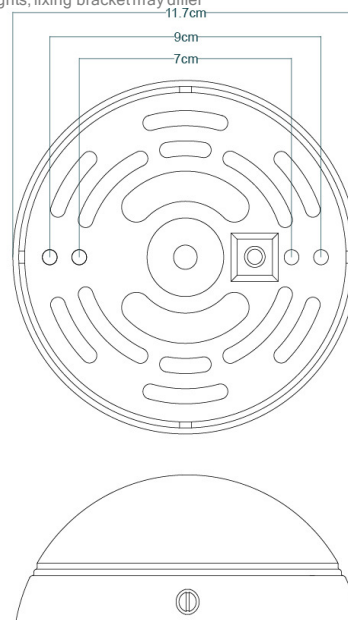
MLP407SATBRS Satin Brass



MATERIAL	Brass
HEIGHT	6cm 2.36"
WIDTH DIAMETER	2.8cm 1.1"
LENGTH PROJECTION	n/a
WEIGHT	0.76KG 1.68lbs
LAMPHOLDER	Integrated x 0
MAX WATTAGE	- x 0
VOLTAGE	220/240v or 110/120v
IP RATING	20
CLASS PROTECTION	I
SHADE	-
FLEX BAR CHAIN LENGT	100cm 40"
CABLE TYPE	MLCA028 2 Core Round Black Braid PVC

Fixing Bracket MLWB11 | Satin Brass

*For UL wired lights, fixing bracket may differ



Product Notes:

1) Lamps included with light fixture. 2) All products are individually hand crafted, therefore may differ slightly within manufacturing tolerances. 3) Please refer to: <http://www.mullanlighting.com/terms> for full list of Terms & Conditions. 4) Cable/Chain can be shortened during installation. 5) Longer Cable/Chain available on request. 6) Additional colour finishes available on request. 7.) Dimensions do not include lamps. 8.) Products wired to UL standards will operate at 110/120v with the appropriate lampholders.