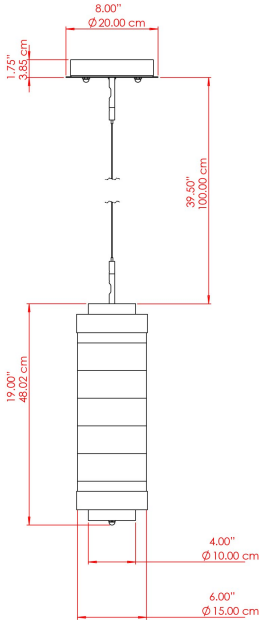




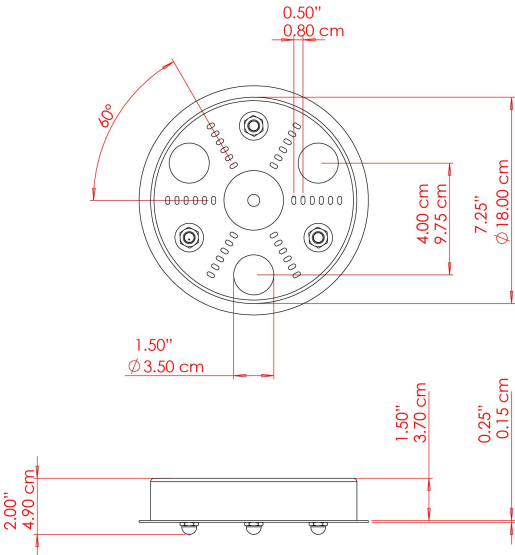
ASHFORD Pendant

MLP520ANTBRS Antique Brass



MATERIAL	Brass Steel Acrylic
HEIGHT	22.75"
WIDTH DIAMETER	6"
LENGTH PROJECTION	6"
WEIGHT	4.7 kg 10.3 lbs
LAMPHOLDER	E26
MAX WATTAGE	4W
VOLTAGE	110/120v
ENVIRONMENTAL RATING	Dry Location (IP20)
CLASS PROTECTION	Class I
SHADE	-
FLEX BAR CHAIN LENGTH	40"
CABLE TYPE	MLCA071 Black Fabric Braided Cable 2 Core Round UL

FIXING BRACKET: MLROSE25



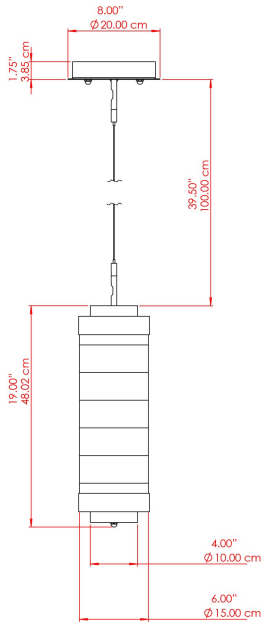
Product Notes:
1) Bulbs not included. 2) Dimensions do not include bulbs. 3) All products are individually made-to-order and therefore may differ slightly within manufacturing tolerances. 4) Cable / chain can be shortened during installation. Longer cable / chain lengths available on request. 5) Additional color finishes may be available on request. 6) Twisted cable is not available for UL wired products. Round cable in black or brown only is supplied instead. 7) Refer to our website for a full list of terms and conditions.





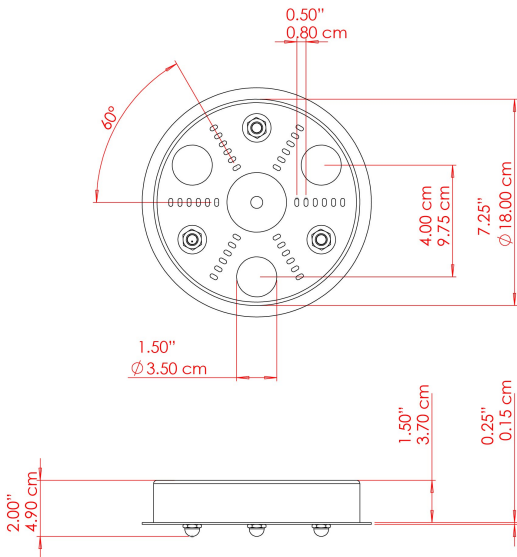
ASHFORD Pendant

MLP520ANTSLV Antique Silver



MATERIAL	Brass Steel Acrylic
HEIGHT	22.75"
WIDTH DIAMETER	6"
LENGTH PROJECTION	6"
WEIGHT	4.7 kg 10.3 lbs
LAMPHOLDER	E26
MAX WATTAGE	4W
VOLTAGE	110/120v
ENVIRONMENTAL RATING	Dry Location (IP20)
CLASS PROTECTION	Class I
SHADE	-
FLEX BAR CHAIN LENGTH	40"
CABLE TYPE	MLCA071 Black Fabric Braided Cable 2 Core Round UL

FIXING BRACKET: MLROSE25



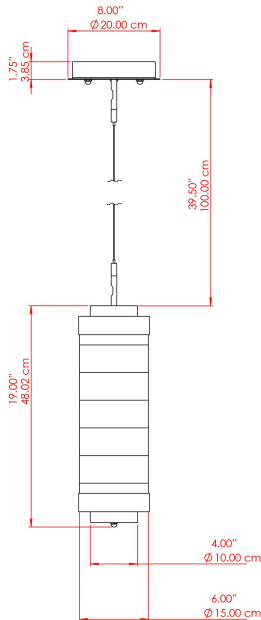
Product Notes:
1) Bulbs not included. 2) Dimensions do not include bulbs. 3) All products are individually made-to-order and therefore may differ slightly within manufacturing tolerances. 4) Cable / chain can be shortened during installation. Longer cable / chain lengths available on request. 5) Additional color finishes may be available on request. 6) Twisted cable is not available for UL wired products. Round cable in black or brown only is supplied instead. 7) Refer to our website for a full list of terms and conditions.





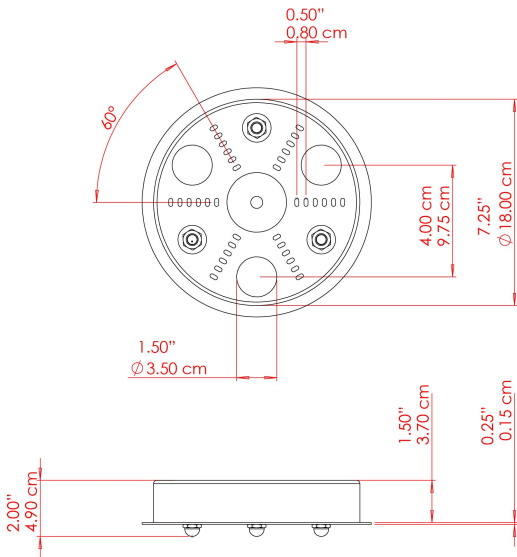
ASHFORD Pendant

MLP520PCMBK Matt Black



MATERIAL	Brass Steel Acrylic
HEIGHT	22.75"
WIDTH DIAMETER	6"
LENGTH PROJECTION	6"
WEIGHT	4.7 kg 10.3 lbs
LAMPHOLDER	E26
MAX WATTAGE	4W
VOLTAGE	110/120v
ENVIRONMENTAL RATING	Dry Location (IP20)
CLASS PROTECTION	Class I
SHADE	-
FLEX BAR CHAIN LENGTH	40"
CABLE TYPE	MLCA071 Black Fabric Braided Cable 2 Core Round UL

FIXING BRACKET: MLROSE25



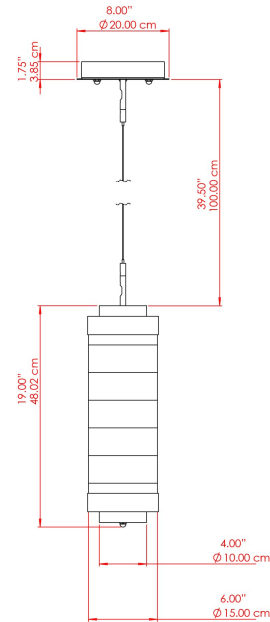
Product Notes:
1) Bulbs not included. 2) Dimensions do not include bulbs. 3) All products are individually made-to-order and therefore may differ slightly within manufacturing tolerances. 4) Cable / chain can be shortened during installation. Longer cable / chain lengths available on request. 5) Additional color finishes may be available on request. 6) Twisted cable is not available for UL wired products. Round cable in black or brown only is supplied instead. 7) Refer to our website for a full list of terms and conditions.





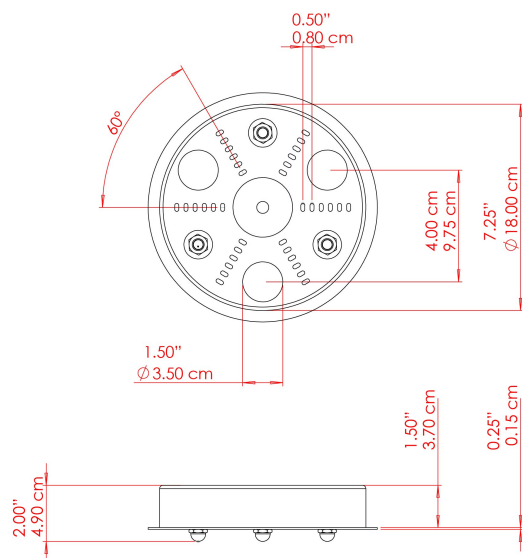
ASHFORD Pendant

MLP520POLBRS Polished Brass



MATERIAL	Brass Steel Acrylic
HEIGHT	22.75"
WIDTH DIAMETER	6"
LENGTH PROJECTION	6"
WEIGHT	4.7 kg 10.3 lbs
LAMPHOLDER	E26
MAX WATTAGE	4W
VOLTAGE	110/120v
ENVIRONMENTAL RATING	Dry Location (IP20)
CLASS PROTECTION	Class I
SHADE	-
FLEX BAR CHAIN LENGTH	40"
CABLE TYPE	MLCA071 Black Fabric Braided Cable 2 Core Round UL

FIXING BRACKET: MLROSE25



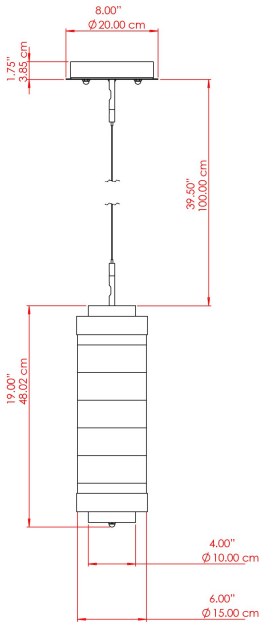
Product Notes:
1) Bulbs not included. 2) Dimensions do not include bulbs. 3) All products are individually made-to-order and therefore may differ slightly within manufacturing tolerances. 4) Cable / chain can be shortened during installation. Longer cable / chain lengths available on request. 5) Additional color finishes may be available on request. 6) Twisted cable is not available for UL wired products. Round cable in black or brown only is supplied instead. 7) Refer to our website for a full list of terms and conditions.





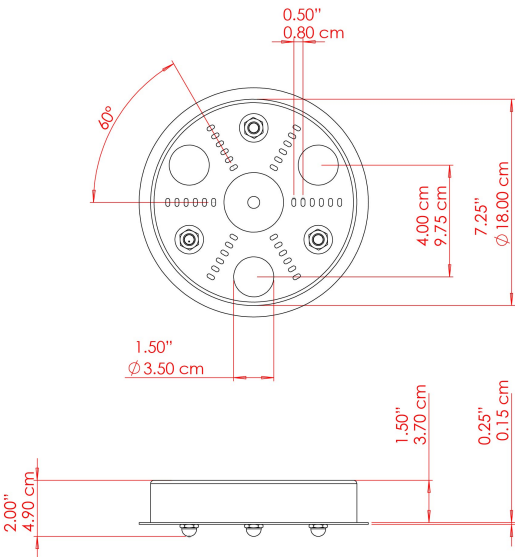
ASHFORD Pendant

MLP520SATBRS Satin Brass



MATERIAL	Brass Steel Acrylic
HEIGHT	22.75"
WIDTH DIAMETER	6"
LENGTH PROJECTION	6"
WEIGHT	4.7 kg 10.3 lbs
LAMPHOLDER	E26
MAX WATTAGE	4W
VOLTAGE	110/120v
ENVIRONMENTAL RATING	Dry Location (IP20)
CLASS PROTECTION	Class I
SHADE	-
FLEX BAR CHAIN LENGTH	40"
CABLE TYPE	MLCA071 Black Fabric Braided Cable 2 Core Round UL

FIXING BRACKET: MLROSE25



Product Notes:
1) Bulbs not included. 2) Dimensions do not include bulbs. 3) All products are individually made-to-order and therefore may differ slightly within manufacturing tolerances. 4) Cable / chain can be shortened during installation. Longer cable / chain lengths available on request. 5) Additional color finishes may be available on request. 6) Twisted cable is not available for UL wired products. Round cable in black or brown only is supplied instead. 7) Refer to our website for a full list of terms and conditions.

