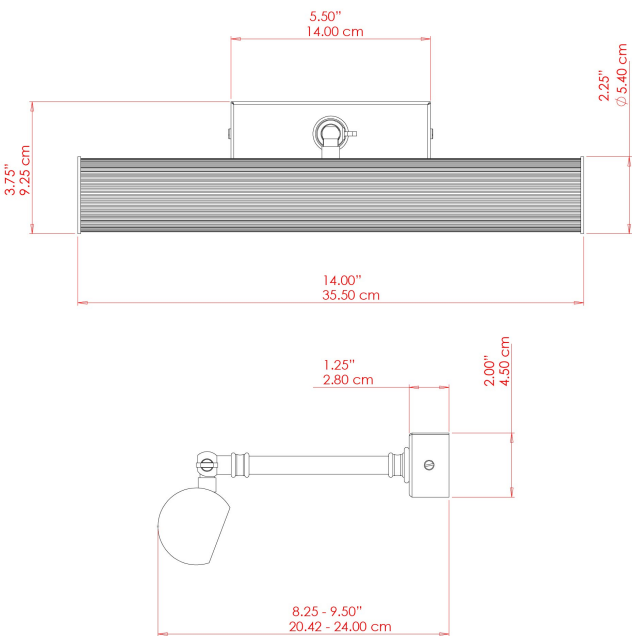


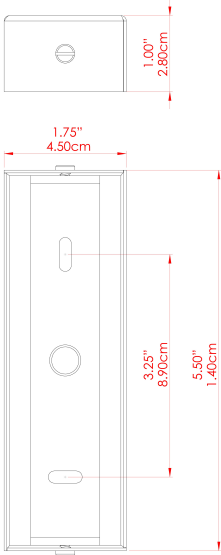
CAMBRIDGE Picture Light

MPL028ANTBRS Antique Brass



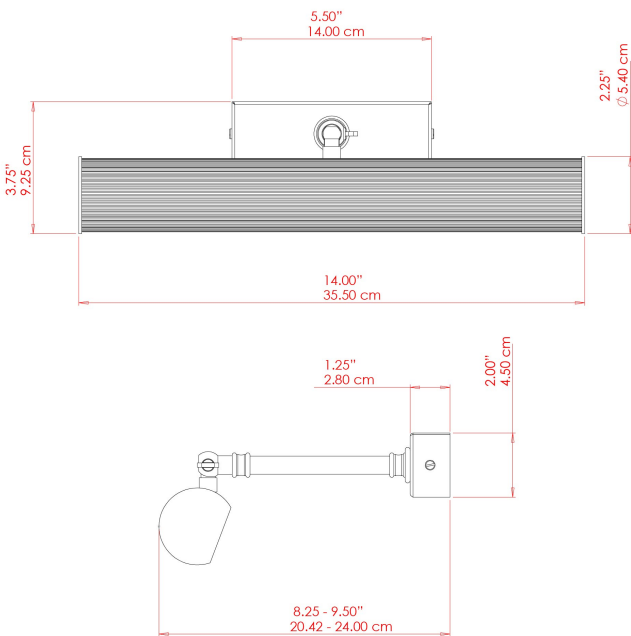
MATERIAL	Brass
HEIGHT	9.25 cm
WIDTH DIAMETER	35.5cm
LENGTH PROJECTION	24 cm
WEIGHT	0.8 kg
LAMPHOLDER	G9
MAX WATTAGE	6.5W
VOLTAGE	220/240v
IP RATING	IP20
CLASS PROTECTION	Class I
SHADE	-
FLEX BAR CHAIN LENGTH	n/a
CABLE TYPE	-

FIXING BRACKET: MLWB06 | Antique Brass



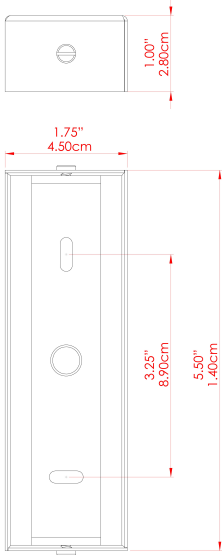
CAMBRIDGE Picture Light

MPL028ANTSLV Antique Silver



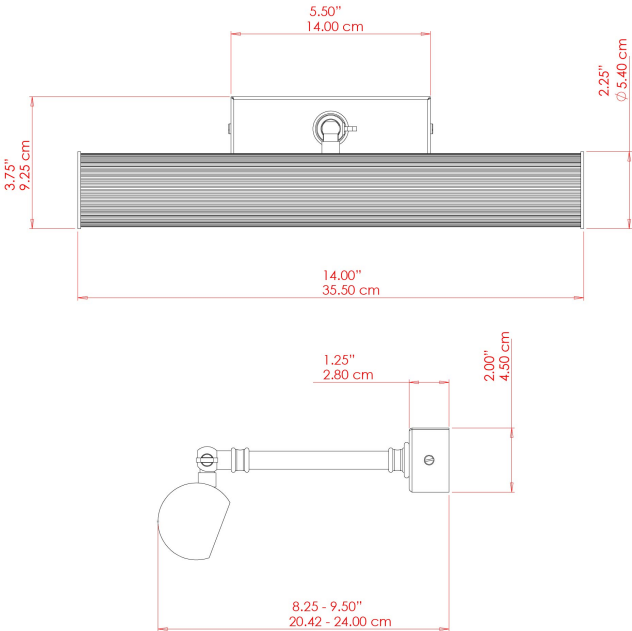
MATERIAL	Brass
HEIGHT	9.25 cm
WIDTH DIAMETER	35.5cm
LENGTH PROJECTION	24 cm
WEIGHT	0.8 kg
LAMPHOLDER	G9
MAX WATTAGE	6.5W
VOLTAGE	220/240v
IP RATING	IP20
CLASS PROTECTION	Class I
SHADE	-
FLEX BAR CHAIN LENGTH	n/a
CABLE TYPE	-

FIXING BRACKET: MLWB06 | Antique Silver



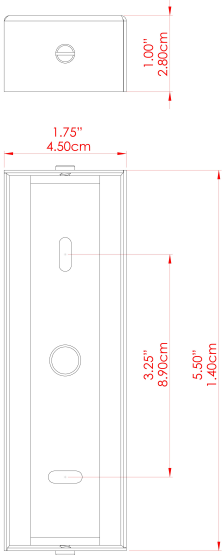
CAMBRIDGE Picture Light

MPL028PCBLK Black



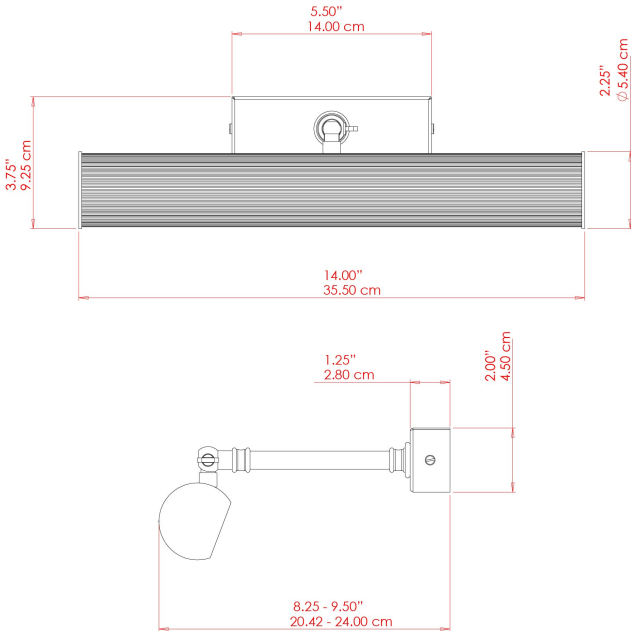
MATERIAL	Brass
HEIGHT	9.25 cm
WIDTH DIAMETER	35.5cm
LENGTH PROJECTION	24 cm
WEIGHT	0.8 kg
LAMPHOLDER	G9
MAX WATTAGE	6.5W
VOLTAGE	220/240v
IP RATING	IP20
CLASS PROTECTION	Class I
SHADE	-
FLEX BAR CHAIN LENGTH	n/a
CABLE TYPE	-

FIXING BRACKET: MLWB06 | Gloss Black



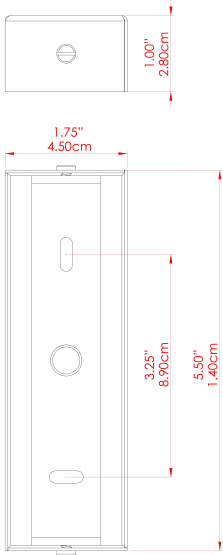
CAMBRIDGE Picture Light

MPL028PCMBK Matt Black



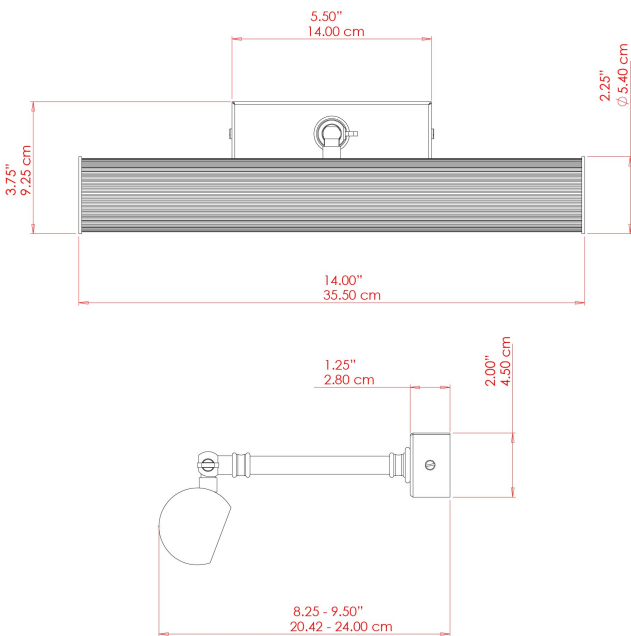
MATERIAL	Brass
HEIGHT	9.25 cm
WIDTH DIAMETER	35.5cm
LENGTH PROJECTION	24 cm
WEIGHT	0.8 kg
LAMPHOLDER	G9
MAX WATTAGE	6.5W
VOLTAGE	220/240v
IP RATING	IP20
CLASS PROTECTION	Class I
SHADE	-
FLEX BAR CHAIN LENGTH	n/a
CABLE TYPE	-

FIXING BRACKET: MLWB06 | Matt Black



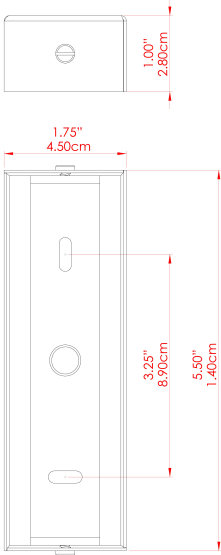
CAMBRIDGE Picture Light

MPL028POLBRS Polished Brass



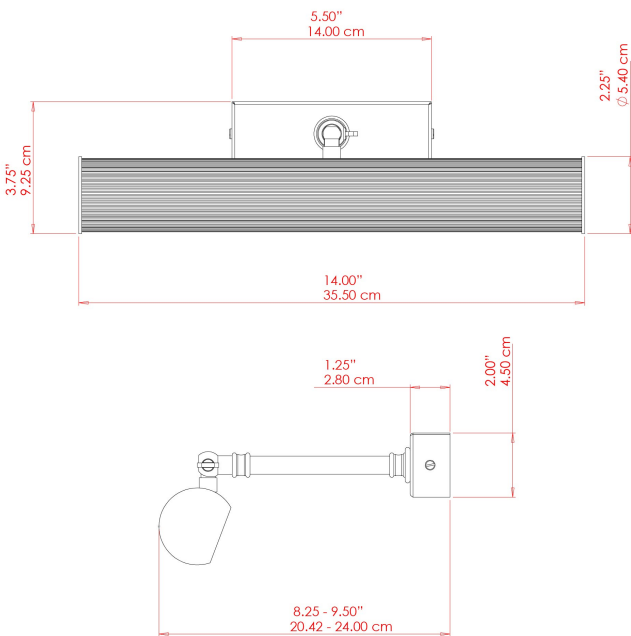
MATERIAL	Brass
HEIGHT	9.25 cm
WIDTH DIAMETER	35.5cm
LENGTH PROJECTION	24 cm
WEIGHT	0.8 kg
LAMPHOLDER	G9
MAX WATTAGE	6.5W
VOLTAGE	220/240v
IP RATING	IP20
CLASS PROTECTION	Class I
SHADE	-
FLEX BAR CHAIN LENGTH	n/a
CABLE TYPE	-

FIXING BRACKET: MLWB06 | Polished Black



CAMBRIDGE Picture Light

MPL028SATBRS Satin Brass



MATERIAL	Brass
HEIGHT	9.25 cm
WIDTH DIAMETER	35.5cm
LENGTH PROJECTION	24 cm
WEIGHT	0.8 kg
LAMPHOLDER	G9
MAX WATTAGE	6.5W
VOLTAGE	220/240v
IP RATING	IP20
CLASS PROTECTION	Class I
SHADE	-
FLEX BAR CHAIN LENGTH	n/a
CABLE TYPE	-

FIXING BRACKET: MLWB06 | Satin Brass

