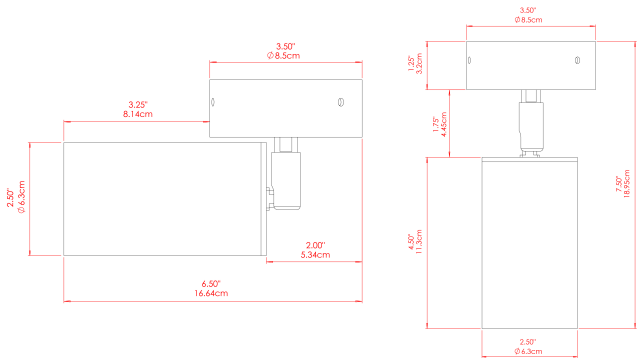


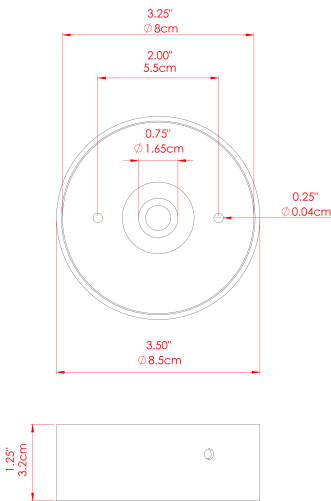
EVANSTON Wall Light

MLWL518ANTBRS Antique Brass



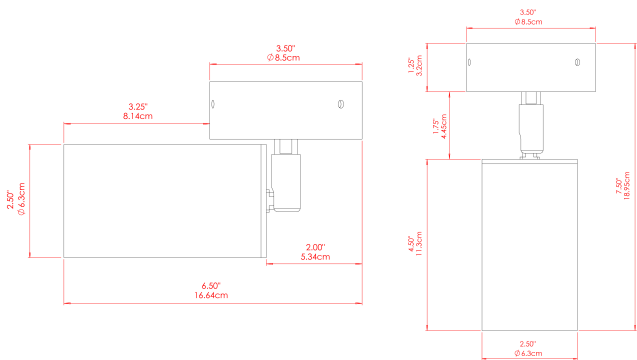
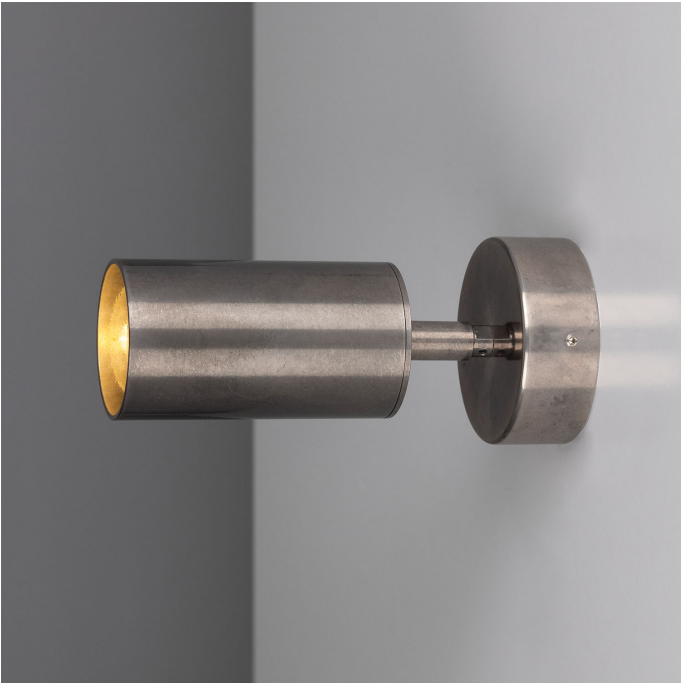
MATERIAL	Brass
HEIGHT	20cm
WIDTH DIAMETER	8.5cm
LENGTH PROJECTION	n/a
WEIGHT	0.8 kg
LAMPHOLDER	GU10
MAX WATTAGE	5W
VOLTAGE	220/240v
IP RATING	IP20
CLASS PROTECTION	Class I
SHADE	-
FLEX BAR CHAIN LENGTH	n/a
CABLE TYPE	MLCA009 Black PVC Flexible Cable 2 Core

FIXING BRACKET: MLWB13 | Antique Brass



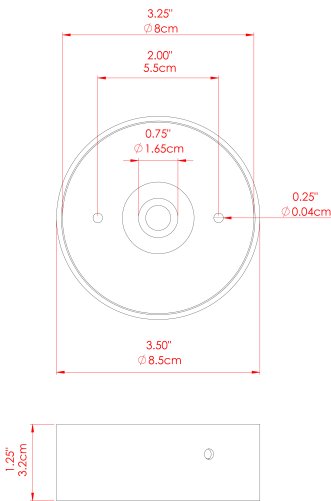
EVANSTON Wall Light

MLWL518ANTSLV Antique Silver



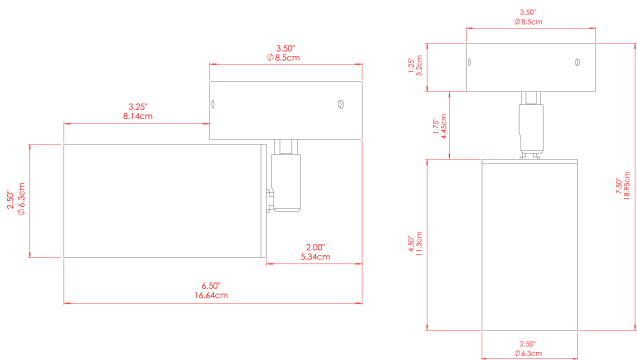
MATERIAL	Brass
HEIGHT	20cm
WIDTH DIAMETER	8.5cm
LENGTH PROJECTION	n/a
WEIGHT	0.8 kg
LAMPHOLDER	GU10
MAX WATTAGE	5W
VOLTAGE	220/240v
IP RATING	IP20
CLASS PROTECTION	Class I
SHADE	-
FLEX BAR CHAIN LENGTH	n/a
CABLE TYPE	MLCA009 Black PVC Flexible Cable 2 Core

FIXING BRACKET: MLWB13 | Antique Silver



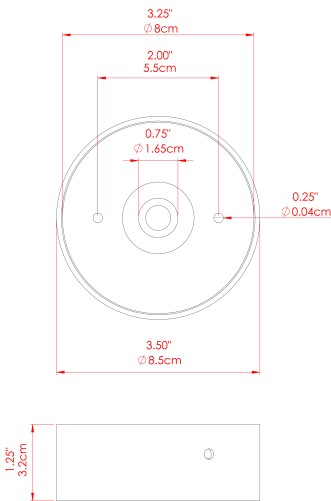
EVANSTON Wall Light

MLWL518POLBRS Polished Brass



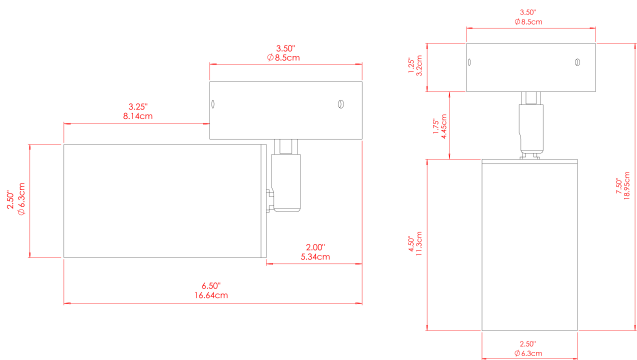
MATERIAL	Brass
HEIGHT	20cm
WIDTH DIAMETER	8.5cm
LENGTH PROJECTION	n/a
WEIGHT	0.8 kg
LAMPHOLDER	GU10
MAX WATTAGE	5W
VOLTAGE	220/240v
IP RATING	IP20
CLASS PROTECTION	Class I
SHADE	-
FLEX BAR CHAIN LENGTH	n/a
CABLE TYPE	MLCA009 Black PVC Flexible Cable 2 Core

FIXING BRACKET: MLWB13 | Polished Brass



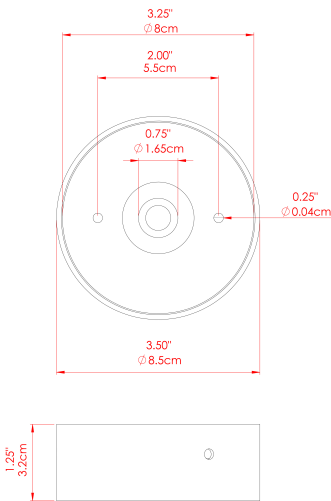
EVANSTON Wall Light

MLWL518SATBRS Satin Brass



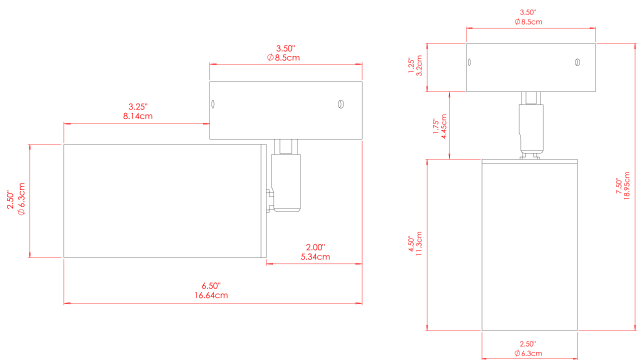
MATERIAL	Brass
HEIGHT	20cm
WIDTH DIAMETER	8.5cm
LENGTH PROJECTION	n/a
WEIGHT	0.8 kg
LAMPHOLDER	GU10
MAX WATTAGE	5W
VOLTAGE	220/240v
IP RATING	IP20
CLASS PROTECTION	Class I
SHADE	-
FLEX BAR CHAIN LENGTH	n/a
CABLE TYPE	MLCA009 Black PVC Flexible Cable 2 Core

FIXING BRACKET: MLWB13 | Satin Brass



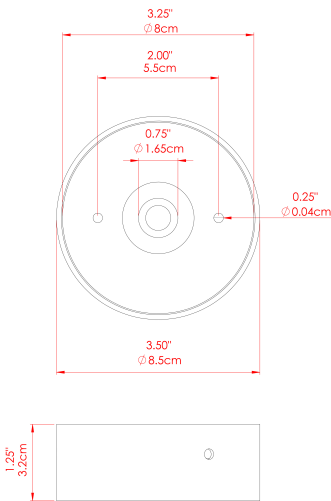
EVANSTON Wall Light

MLWL518PCMBK Matt Black



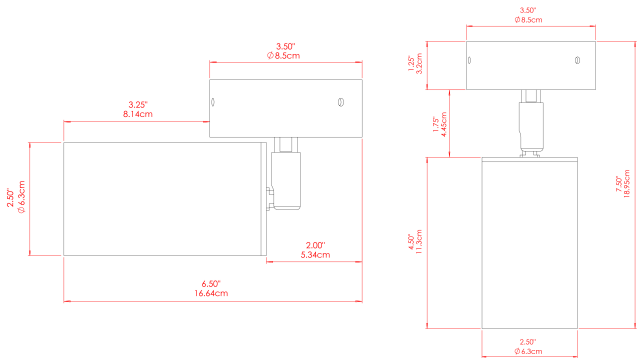
MATERIAL	Brass
HEIGHT	20cm
WIDTH DIAMETER	8.5cm
LENGTH PROJECTION	n/a
WEIGHT	0.8 kg
LAMPHOLDER	GU10
MAX WATTAGE	5W
VOLTAGE	220/240v
IP RATING	IP20
CLASS PROTECTION	Class I
SHADE	-
FLEX BAR CHAIN LENGTH	n/a
CABLE TYPE	MLCA009 Black PVC Flexible Cable 2 Core

FIXING BRACKET: MLWB13 | Matte Black



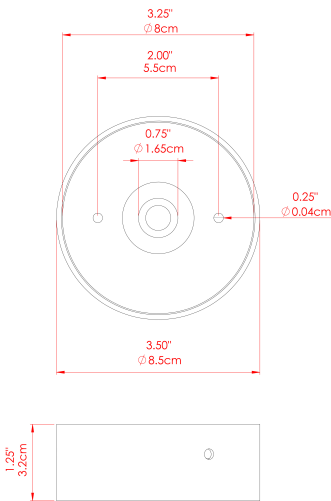
EVANSTON Wall Light

MLWL518PCMMT



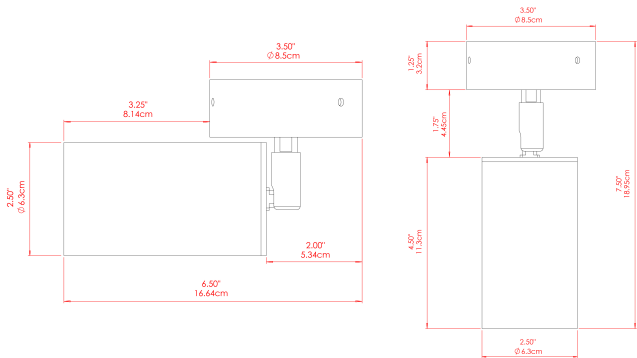
MATERIAL	Brass
HEIGHT	20cm
WIDTH DIAMETER	8.5cm
LENGTH PROJECTION	n/a
WEIGHT	0.8 kg
LAMPHOLDER	GU10
MAX WATTAGE	5W
VOLTAGE	220/240v
IP RATING	IP20
CLASS PROTECTION	Class I
SHADE	-
FLEX BAR CHAIN LENGTH	n/a
CABLE TYPE	MLCA009 Black PVC Flexible Cable 2 Core

FIXING BRACKET: MLWB13 | PC Mint Turquoise



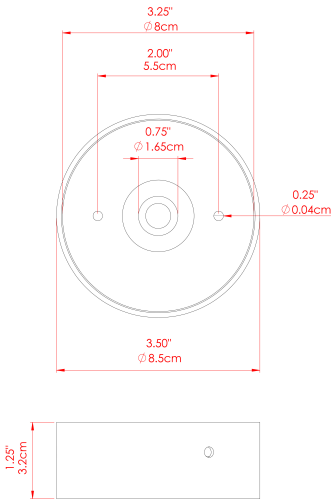
EVANSTON Wall Light

MLWL518PCMSB



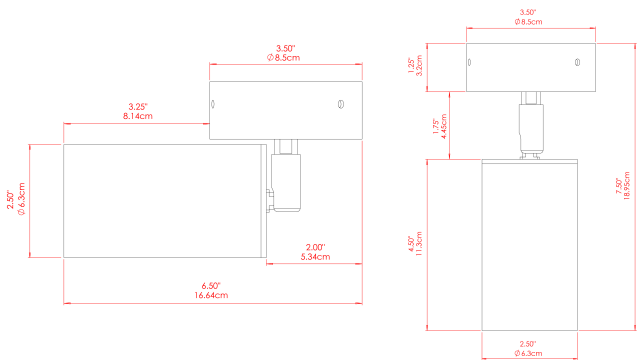
MATERIAL	Brass
HEIGHT	20cm
WIDTH DIAMETER	8.5cm
LENGTH PROJECTION	n/a
WEIGHT	0.8 kg
LAMPHOLDER	GU10
MAX WATTAGE	5W
VOLTAGE	220/240v
IP RATING	IP20
CLASS PROTECTION	Class I
SHADE	-
FLEX BAR CHAIN LENGTH	n/a
CABLE TYPE	MLCA009 Black PVC Flexible Cable 2 Core

FIXING BRACKET: MLWB13 | PC Sapphire Blue



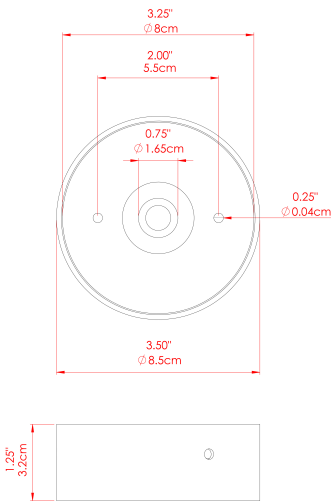
EVANSTON Wall Light

MLWL518PCMHY



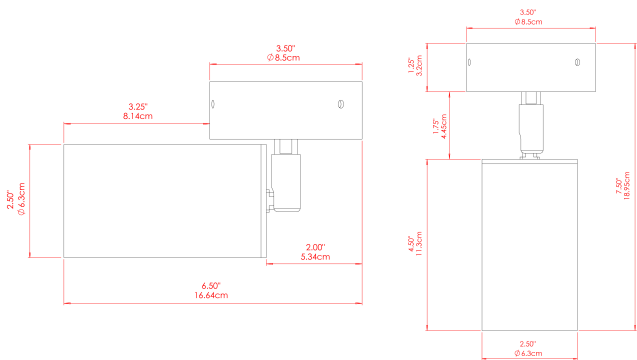
MATERIAL	Brass
HEIGHT	20cm
WIDTH DIAMETER	8.5cm
LENGTH PROJECTION	n/a
WEIGHT	0.8 kg
LAMPHOLDER	GU10
MAX WATTAGE	5W
VOLTAGE	220/240v
IP RATING	IP20
CLASS PROTECTION	Class I
SHADE	-
FLEX BAR CHAIN LENGTH	n/a
CABLE TYPE	MLCA009 Black PVC Flexible Cable 2 Core

FIXING BRACKET: MLWB13 | PC Mustard Honey Yellow



EVANSTON Wall Light

MLWL518PCMAP



MATERIAL	Brass
HEIGHT	20cm
WIDTH DIAMETER	8.5cm
LENGTH PROJECTION	n/a
WEIGHT	0.8 kg
LAMPHOLDER	GU10
MAX WATTAGE	5W
VOLTAGE	220/240v
IP RATING	IP20
CLASS PROTECTION	Class I
SHADE	-
FLEX BAR CHAIN LENGTH	n/a
CABLE TYPE	MLCA009 Black PVC Flexible Cable 2 Core

FIXING BRACKET: MLWB13 | Antique Pink

