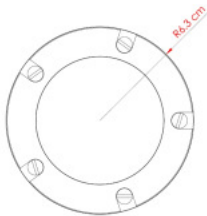
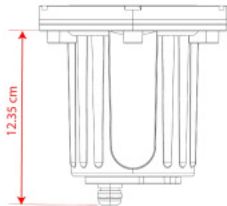
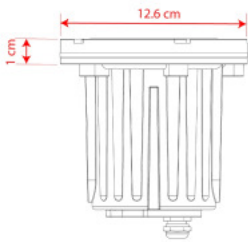




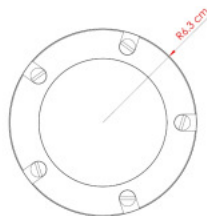
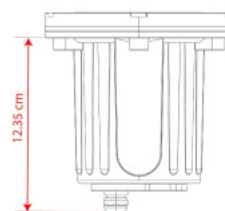
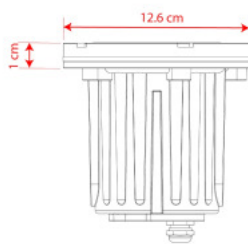
ANTWERP

MLOSL028ANTBRS    Antique Brass



MATERIAL	Brass   Glass   Plastic   Metal
HEIGHT	14cm   5.51"
WIDTH   DIAMETER	12.6cm   4.96"
LENGTH   PROJECTION	1cm   0.39"
WEIGHT	0.76KG   1.68lbs
LAMP HOLDER	E14 or E12 *
MAX WATTAGE	5W x 1
VOLTAGE	220/240v or 110/120v *
IP RATING	65
CLASS PROTECTION	II
SHADE CODE	-
CABLE   CHAIN   BAR LENGT	n/a
CABLE TYPE	-

Fixing Bracket -  
\* Fixing bracket may differ for UL wired products.



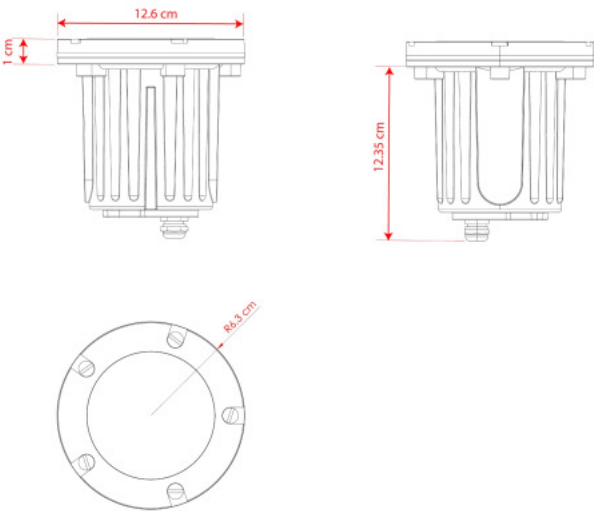
MATERIAL	Brass   Glass   Plastic   Metal
HEIGHT	14cm   5.51"
WIDTH   DIAMETER	12.6cm   4.96"
LENGTH   PROJECTION	1cm   0.39"
WEIGHT	0.76KG   1.68lbs
LAMP HOLDER	E14 or E12 *
MAX WATTAGE	5W x 1
VOLTAGE	220/240v or 110/120v *
IP RATING	65
CLASS PROTECTION	II
SHADE CODE	-
CABLE   CHAIN   BAR LENGT	n/a
CABLE TYPE	-

#### Fixing Bracket -

\* Fixing bracket may differ for UL wired products.

#### Product Notes:

1) Bulbs not included. 2) Dimensions do not include bulbs. 3) All products are individually made-to-order and therefore may differ slightly within manufacturing tolerances. 4) Cable / chain can be shortened during installation. Longer cable / chain lengths available on request. 5) Additional colour finishes may be available on request. 6) UL wired products operate at 110/120v with the appropriate lamp holder. 7) Twisted cable is not available for UL wired products. Round cable in black or brown only is supplied instead. 8) Refer to our website for a full list of terms and conditions.



MATERIAL	Brass   Glass   Plastic   Metal
HEIGHT	14cm   5.51"
WIDTH   DIAMETER	12.6cm   4.96"
LENGTH   PROJECTION	1cm   0.39"
WEIGHT	0.76KG   1.68lbs
LAMP HOLDER	E14 or E12 *
MAX WATTAGE	5W x 1
VOLTAGE	220/240v or 110/120v *
IP RATING	65
CLASS PROTECTION	I
SHADE CODE	-
CABLE   CHAIN   BAR LENGT	n/a
CABLE TYPE	-

Fixing Bracket -  
\* Fixing bracket may differ for UL wired products.